

Adult Education Academy

for master's students, doctoral students and practitioners

International and comparative studies
in adult education and lifelong learning



3 - 14 February 2025

in Würzburg/Bavaria, German

#AEAcademyWue

In cooperation with



PÉCSI TUDOMÁNYEGYETEM
UNIVERSITY OF PÉCS

University of Pecs - Hungary



Bayero University Kano -
Nigeria



HELMUT SCHMIDT
UNIVERSITÄT
Universität der Bundeswehr Hamburg

Helmut Schmidt University
of Hamburg - Germany



University of Belgrade -
Serbia



FF
UNIVERSITY
OF LJUBLJANA
Faculty
of Arts

University of Ljubljana -
Slovenia



UNIVERSITÀ
DEGLI STUDI
FIRENZE

University of Florence - Italy



UNIVERSITÀ
DEGLI STUDI
DI PADOVA

University of Padua - Italy



Universidade do Minho
Instituto de Educação

University of Minho -
Portugal



International Institute of
Adult and Lifelong
Education - India



INSTITUTO DE
EDUCAÇÃO
ULISBOA

University of Lisbon -
Portugal



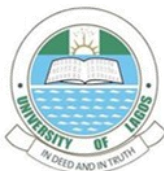
DVV International



European Association for the
Education of Adults



University of Duisburg-Essen
- Germany



University of Lagos - Nigeria



Delhi University - India



Age-it. Ageing well in an
ageing society

With financial support from



Erasmus+



Human Dynamics Centre

Index

Structure of the Adult Education Academy	04
Week one, 3 - 7 February 2025	06
First week, 3 - 7 February 2025	
Option 1: International strategies in adult education	07
Option 2: Paulo Freire, adult and permanent education	11
Week two, 10 - 14 February 2025.....	14
Second week, 10 - 14 February 2025	
Comparative studies in adult education and lifelong learning	14
Comparative groups overview	19
Comparative groups moderators	20
Certification and follow-up	24
Join us on social media	25
Travel & Venue	26
Accommodation.....	27
Key.....	27
JMU platforms	28
Team of the Adult Education Academy	29

Structure of the Adult Education Academy

Since 2014, the Adult Education Academy promotes international networks in adult education and lifelong learning, aiming to foster a connection between academic learning and the field of adult education.

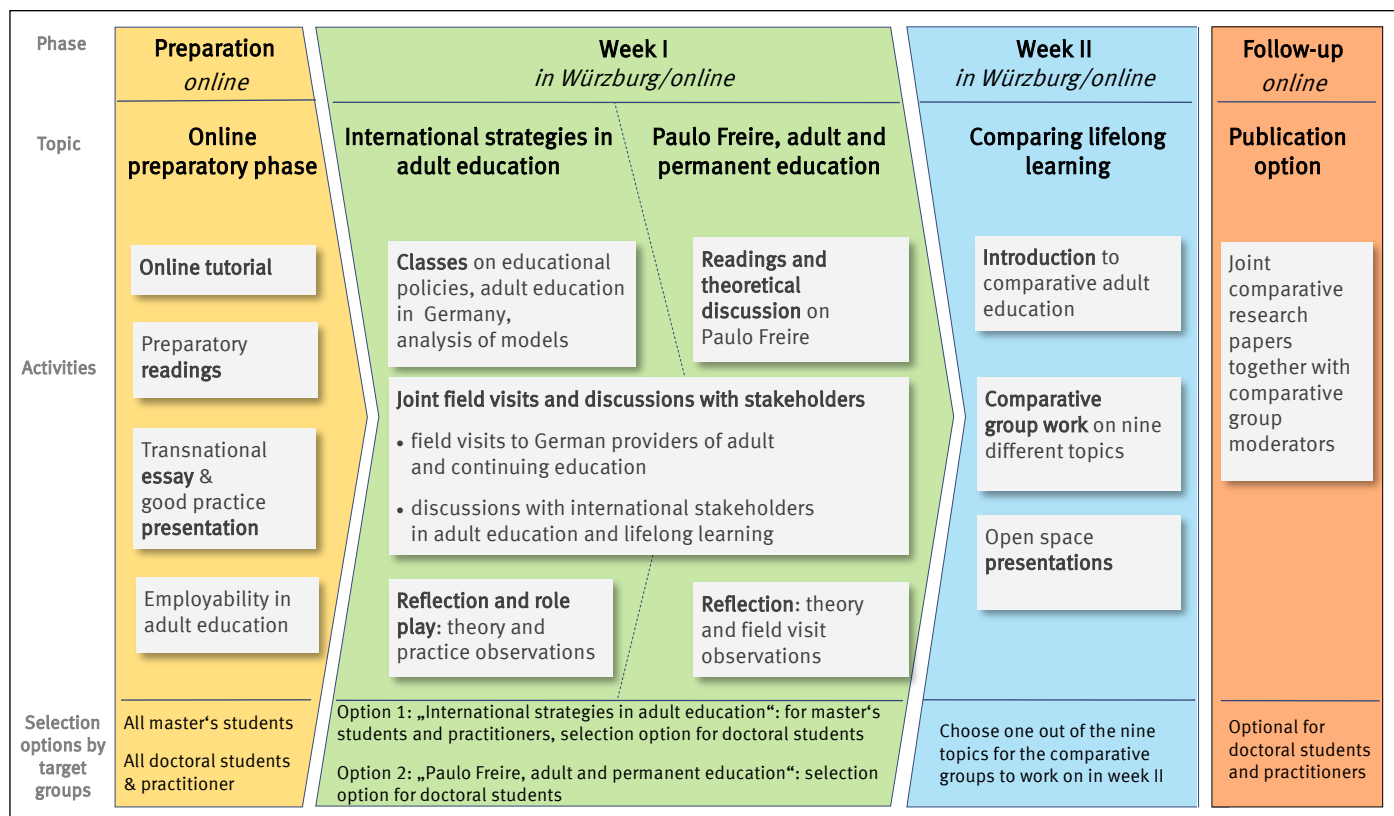
During the preparatory phase and the two-week intensive programme, participants develop and refine their analytical and comparative skills in adult education in an international environment. They gain an understanding of internationally relevant educational policies in the context of lifelong learning, while strengthening their communication, teambuilding and critical thinking skills by working together in this international setting.

Target groups

Master's and doctoral students in adult education, as well as colleagues from the field of adult education and lifelong learning (hereafter "practitioners") are invited to join the Adult Education Academy in Würzburg. Practitioners should have experiences in adult education (e.g. teaching, programme planning, management in institutions of adult education associations). As a minimum requirement, all participants should hold a bachelor's degree (or equivalent) in a subject related to adult and lifelong learning.

Structure

The Adult Education Academy is divided into an (1) online preparatory phase, (2) a two-week intensive programme featuring (2.1) the first week 3-7 February 2025 & (2.2) the second week from 10-14 February 2025 in a hybrid mode and (3) an optional follow-up. The two-week intensive programme will be organised online and on campus in Würzburg.





Preparatory phase

The preparatory phase is essential for participation in the Adult Education Academy. It provides participants with the necessary knowledge and abilities for the two-week Adult Education Academy programme in February 2025. The preparatory phase, which begins in November 2024 and ends in January 2025, can be divided into three parts. During the first part, participants are divided into two groups: one consisting of master's students and practitioners and another consisting of doctoral students. The master's students and practitioners will address the topic "International strategies in adult education", whereas the doctoral students can decide whether they want to join the same group or rather work on the topic "Paulo Freire, adult and permanent education". The second part takes place within the comparative groups. Last but not least, the third part addresses employability in adult education.

The preparation will take place online. Materials provided during this phase include an online tutorial, readings and group sessions for discussions. At the end of the preparatory phase, master's and doctoral students submit a transnational essay; practitioners submit a good practice presentation. The topics of the essays will depend on the comparative groups chosen by the participants. Central to the successful completion of the Adult Education Academy is the active cooperation and independent preparation of the contents and materials in the preparation phase by the participants for the two-week intensive programme in February.



Week I

The group "International policies in adult education and lifelong learning" (for master's and doctoral students as well as practitioners) will focus on a critical reflection of current education policies based on a theoretical model developed by Lima/Guimarães.

The option "Paulo Freire, adult and permanent education" (for doctoral students) is based on readings and discussions of selected texts by Paulo Freire.

During the first week of the Adult Education Academy, doctoral students have the opportunity to take a class on Paulo Freire's theories for "adult and permanent education". This class is based on readings and discussions of selected texts by Paulo Freire. The doctoral students will develop a theoretical-analytical perspective and will focus on more specialised theoretical knowledge to be able to synthesise different perspectives systematically and theoretically. If they prefer, doctoral students may also join the master's students and practitioners in the class on "International strategies in adult education".

The theoretical insights in both groups (International policies in adult education and lifelong learning & Paulo Freire, adult and permanent education) will be accompanied by field visits to adult education providers in and around Würzburg. Furthermore, presentations of international adult education associations (European Association for the Education of Adults, International Council in Adult Education, DVV International) are organised to serve as case studies for practicing the analytical models or the theories discussed in the two classes.



Week II

During the second week, the participants will work in comparative groups divided by nine different topics in adult education and lifelong learning. Participants will choose the topic of their transnational essay based on the focus of the comparative group they will be assigned to prior to the Academy. On the last day of the Adult Education Academy, the results of the comparisons will be presented to all other groups.

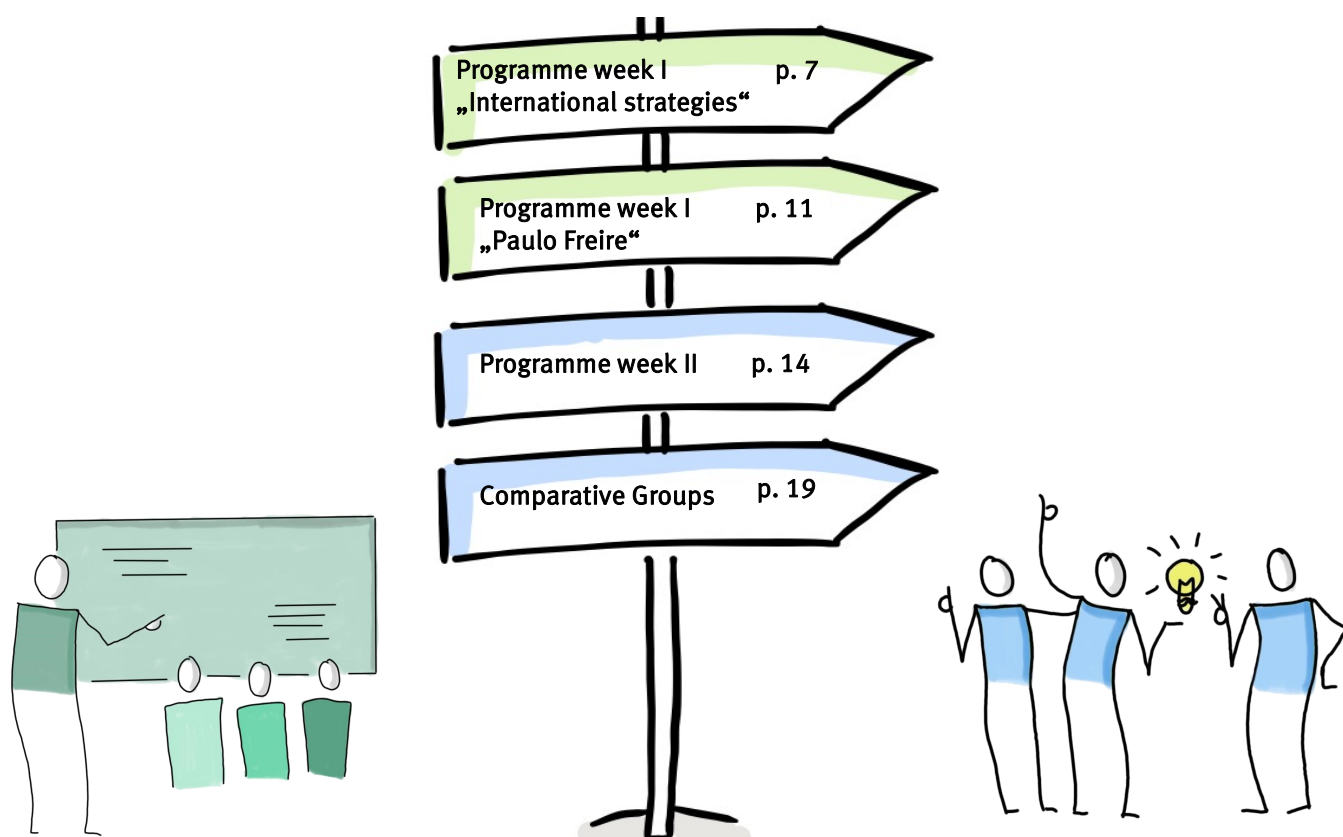


Certification and follow-up

After participating fully in the Adult Education Academy and submitting either a transnational essay or a good practice presentation, all participants receive a participation certificate. In addition, there are two possibilities for enrolled students to receive ECTS credits. For more information, see page 24.

Doctoral students and practitioners have the possibility to get guidance for publishing a joint comparative paper after the Adult Education Academy.

Programme of the Adult Education Academy 03 - 14 February 2025



Phase	Week I <i>in Würzburg</i>		Week II <i>in Würzburg</i>
Topic	International strategies in adult education	Paulo Freire, adult and permanent education	Comparing lifelong learning
Activities	<p>Classes on educational policies, adult education in Germany, analysis of models</p> <p>Joint field visits and discussions with stakeholders</p> <ul style="list-style-type: none"> field visits to German providers of adult and continuing education discussions with international stakeholders in adult education and lifelong learning <p>Reflection and role play: theory and practice observations</p>	<p>Readings and theoretical discussion on Paulo Freire</p> <p>Reflection: theory and field visit observations</p>	<p>Introduction to comparative adult education</p> <p>Comparative group work on seven different topics</p> <p>Open space presentations</p>
Selection options by target groups	<p>Option 1: „International strategies in adult education“: for master's students and practitioners, selection option for doctoral students</p> <p>Option 2: „Paulo Freire, adult and permanent education“: selection option for doctoral students</p>		<p>Choose one out of the nine topics for the comparative groups to work on in week II</p>

Week I: International strategies in adult education



Master's students, doctoral students and practitioners working on "International strategies in adult education and lifelong learning" in the first week of the Adult Education Academy will use a policy analysis perspective. This perspective will enhance their analytical skills by integrating and analysing different perspectives. The theoretical analysis perspective is accompanied by field visits to adult education providers in and around Würzburg. Presentations of international adult education organisations (EAEA, ICAE, DVV International) will complete the programme. These insights will be applied to the analytical models as case studies.

Participants who choose this topic will be divided in three groups. These group arrangements are not identical to the comparative groups. Each group will be assigned a course room. Prof. Egetenmeyer, Prof. Vicente and Prof. Kosmerl will be rotating to lead the groups.

Room overview for the Groups A, B & C of international strategies in adult education

Strategies Group A Room: Z6, 2.007 hybrid	Strategies Group B Room: Z6, 2.011
Strategies Group C Room: Z6, 2.012	AEA-Team Office Room: Z6, 2.010

Monday, 3 February 2025

		Room
8.00-9.15	Registration	Z6, 1.012
9.15-10.45	Introduction and welcoming adress	PROF. EGETENMEYER Z6, 1.012
10.45-11.00	<i>Coffee break</i>	
11.00-12.30	Get to know each other	LEIBINGER SAAM BOGDANOVIĆ Z6, 1.012
12.30-14.00	<i>Lunch break</i>	
14.00-15.30	Plenary lecture: The politicity of education: politics, policies, strategies— Introducing Paulo Neves Reglus Freire (1921-1997): Biography and bibliography	PROF. LIMA Z6, 1.012
15.30-15.45	<i>Coffee break</i>	
15.45-17.15	Plenary lecture: The politicity of education: politics, policies, strategies— Introducing Paulo Neves Reglus Freire (1921-1997): Biography and bibliography	PROF. LIMA Z6, 1.012
18.00	Guided City Tour <i>Meeting point: Z6 2nd floor at 17.15</i>	




Week I: International strategies in adult education



Tuesday, 4 February 2025

			Room
9.00-10.30	Group A: Levels of an analysis: "Mega, macro, meso and micro" Group B: Social policy models Group C: Adult education providers in Germany	PROF. VICENTE PROF. KOŠMERL PROF. EGETENMEYER	Z6, 2.007 Z6, 2.011 Z6, 2.012
10.30-10.45	<i>Coffee break</i>		
10.45-12.15	Group A: Levels of an analysis: "Mega, macro, meso and micro" Group B: Social policy models Group C: Adult education providers in Germany	PROF. VICENTE PROF. KOŠMERL PROF. EGETENMEYER	Z6, 2.007 Z6, 2.011 Z6, 2.012
12.15-13.45	<i>Lunch break</i>		
13.45-15.15	Group A: Social policy models Group B: Adult education providers in Germany Group C: Levels of an analysis: "Mega, macro, meso and micro"	PROF. KOŠMERL PROF. EGETENMEYER PROF. VICENTE	Z6, 2.007 Z6, 2.011 Z6, 2.012
15.15-15.30	<i>Coffee break</i>		
15.30-17.00	Group A: Social policy models Group B: Adult education providers in Germany Group C: Levels of an analysis: "Mega, macro, meso and micro"	PROF. KOŠMERL PROF. EGETENMEYER PROF. VICENTE	Z6, 2.007 Z6, 2.011 Z6, 2.012

Wednesday, 5 February 2025

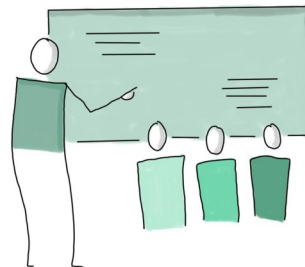
			Room
8.30-10.00	Group A: Adult education providers in Germany Group B: Preparation for field visits Group C: Social policy models	PROF. EGETENMEYER PROF. VICENTE PROF. KOŠMERL	Z6, 2.007 Z6, 2.011 Z6, 2.012
10.00-10.15	<i>Coffee break</i>		
10.15-11.45	Group A: Adult education providers in Germany Group B: Peace, Citizenship and Sustainable Development. Global Recommendations for Adult Education and Lifelong Learning Group C: Social policy models	PROF. EGETENMEYER PROF. HINZEN PROF. KOŠMERL	Z6, 2.007 Z6, 2.011 Z6, 2.012
11.45-13.15	<i>Lunch break</i>		
13.15-14.45	Group A: Preparation for field visits Group B: Mapping the transition in International Policies from Sectors of Adult Education towards Ecosystems of Lifelong Learning Group C: Preparation for field visits	PROF. VICENTE DR. SINGH PROF. KOŠMERL	Z6, 2.007 Z6, 2.011 Z6, 2.012
14.45-15.00	<i>To Volkshochschule: bus ride with the busses 214 from the bus stop "Philosophisches Institute"</i> <i>To IHK: bus ride with bus 7 from the bus stop "Universitätszentrum"</i> <i>To Robert Kümmert-Academy: bus ride with bus 34 and tram 5 from the bus stop "Am Hubland" and "Reuterstraße"</i>		
15.30-17.30	Field visits to providers of adult and continuing education in Würzburg  Volkshochschule (Adult Education Centre) Würzburg and Surroundings e.V. Meeting point: Z6 2nd floor at 14.50  Chamber of Industry and Commerce (IHK) Würzburg-Schweinfurt Meeting point: Z6 1st floor at 14.50  Robert-Kümmert-Academy, Würzburg Meeting point: Z6 ground floor at 14.50	SAAM LEIBINGER PROF. EGETENMEYER	HYBRID

Week I: International strategies in adult education

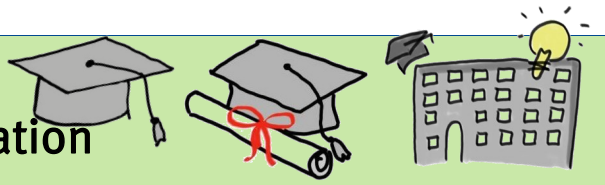


Thursday, 6 February 2025



			Room
8.30-10.00	Group A: Peace, Citizenship and Sustainable Development. Global Recommendations for Adult Education and Lifelong Learning	PROF. HINZEN	Z6, 2.007
	Group B: Levels of an analysis: "Mega, macro, meso and micro"	PROF. VICENTE	Z6, 2.011
	Group C: Mapping the transition in International Policies from Sectors	DR. SINGH	Z6, 2.012
10.00-10.15	<i>Coffee break</i>		
10.15-11.45	Group A: Mapping the transition in International Policies from Sectors of Adult Education towards Ecosystems of Lifelong Learning	DR. SINGH	Z6, 2.007
	Group B: Levels of an analysis: "Mega, macro, meso and micro"	PROF. VICENTE	Z6, 2.011
	Group C: Peace, Citizenship and Sustainable Development. Global Rec-	PROF. HINZEN	Z6, 2.012
12.00-14.00	<i>Bus ride to Frankfurt & Nürnberg</i>		
	Field visits to adult education providers beyond Würzburg		
14.00-16.00	 Bildungszentrum (Education Centre) Nürnberg Meeting point: Z6 2nd floor at 12.00	SAAM	
	 Catholic Adult Education (KEB) Frankfurt Meeting point: Z6 1st floor at 12.00	PROF. EGETENMEYER	
	 Caritas Frankfurt Meeting point: Z6 ground floor at 12.00	BOGDANOVIĆ	
	 Deutsche Bahn (German railway), Frankfurt Meeting point: Z6 ground floor at 12.00	LEIBINGER	HYBRID
16.00-18.30	<i>Free time in Frankfurt & Nürnberg</i>		
18.30	<i>Bus ride back to Würzburg</i>		



Week I: International strategies in adult education



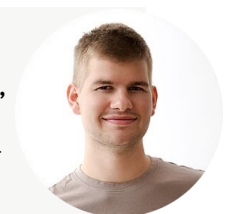
Friday, 7 February 2025

			Room
9.00-10.30	Group A: Role play: Social policy models and adult education practice Group B: Role play: Social policy models and adult education practice Group C: Role play: Social policy models and adult education practice	PROF. KOŠMERL PROF. VICENTE PROF. EGETENMEYER	Z6, 2.007 Z6, 2.011 Z6, 2.012
10.30-10.45	<i>Coffee break</i>		
10.45-12.15	Group A: Role play: Social policy models and adult education practice Group B: Role play: Social policy models and adult education practice Group C: Role play: Social policy models and adult education practice	PROF. KOŠMERL PROF. VICENTE PROF. EGETENMEYER	Z6, 2.007 Z6, 2.011 Z6, 2.012
12.15-13.45	<i>Lunch break</i>		
	Field visits to international adult and continuing education associations		
13.45-15.15	 Esther Hirsch — The role of Adult Education in International Development Cooperation - Position and strategies of DVV International (DVV International)		Z6, 2.007, HYBRID
	 Raffaella Kihrer — Herding cats: European advocacy for adult learning and education (EAEA)		Z6, 2.011, HYBRID
	 Katarina Popović — Non-formal civic education: The example of Serbia (ICAE)		Z6, 2.012, HYBRID
15.15-15.30	<i>Coffee break</i>		
15.30-17.00	Group A: Reflection of field visits Group B: Reflection of field visits Group C: Reflection of field visits	PROF. KOŠMERL PROF. VICENTE PROF. EGETENMEYER	Z6, 2.007 Z6, 2.011 Z6, 2.012

The moderators and lecturers of week I

Prof. Tadej Košmerl, University of Ljubljana, Slovenia

Tadej Košmerl is an Assistant Professor of adult education at the Department of Educational Sciences, Faculty of Arts, University of Ljubljana. His research focuses on adult education policies, adult education for sustainable development, digital transformation in adult education, and transformative learning



Prof. Nélia Vicente, University of Lisbon, Portugal

Nélia Vicente is a Guest Assistant Professor at Instituto de Educação, Universidade de Lisboa. She holds a Master in Sociology. She does a PhD on adult education.

Week I: Paulo Freire, adult and permanent education



In this heavily theory-based class for doctoral students, the participants focus on Paulo Freire's theories for international adult education. The participants will develop a theoretical-analytical perspective.

They will focus on much more specialised theoretical knowledge to be able to synthesise different perspectives systematically and theoretically. The theoretical insights during the first week are accompanied by field visits to adult education providers in and around Würzburg. Furthermore, presentations of international adult education associations are organised (e.g. EAEA, ICAE, DVV International).

Room overview for the Group Paulo Freire, adult and permanent education

Group Freire Room: Z6, 2.006 hybrid	AEA-Team Office Room: Z6, 2.010
---	-----------------------------------

Monday, 3 February 2025




			Room
8.00-9.15	Registration		Z6, 1.012
9.15-10.45	Introduction and welcoming address	PROF. EGETENMEYER	Z6, 1.012
10.45-11.00	<i>Coffee break</i>		
11.00-12.30	Get to know each other	LEIBINGER SAAM BOGDANOVIĆ	Z6, 1.012
12.30-14.00	<i>Lunch break</i>		
14.00-15.30	Plenary lecture: The politicity of education: politics, policies, strategies—Introducing Paulo Neves Reglus Freire (1921-1997): Biography and bibliography	PROF. LIMA	Z6, 1.012
15.30-15.45	<i>Coffee break</i>		
15.45-17.15	Plenary lecture: The politicity of education: politics, policies, strategies—Introducing Paulo Neves Reglus Freire (1921-1997): Biography and bibliography	PROF. LIMA	Z6, 1.012
18.00	Guided City Tour <i>Meeting point: Z6 2nd floor at 17.15</i>		





Tuesday, 4 February 2025

			Room
9.00-10.30	Why studying Freire today? The contributions of Freire to policy studies in ALE/LLL: critical encounters with Ettore Gelpi and Ivan Illich	PROF. LIMA	Z6, 2.006
10.30-10.45	<i>Coffee break</i>		
10.45-12.15	Why studying Freire today? The contributions of Freire to policy studies in ALE/LLL: critical encounters with Ettore Gelpi and Ivan Illich	PROF. LIMA	Z6, 2.006
12.15-13.45	<i>Lunch break</i>		
13.45-15.15	Revisiting the pedagogy of the oppressed to analyse adult learning and education	PROF. LIMA	Z6, 2.006
15.15-15.30	<i>Coffee break</i>		
15.30-17.00	Group work on Freire	PROF. LIMA	Z6, 2.006

Week I: Paulo Freire, adult and permanent education






Wednesday, 5 February 2025			Room
8.30-10.00	The opus magnum: the pedagogy of the oppressed and its main concepts. Radical democracy, liberation and participation; modernization and development. Extension or communication? Education as the practice of freedom.	PROF. LIMA	Z6, 2.006
10.00-10.15	<i>Coffee break</i>		
10.15-11.45	The opus magnum: the pedagogy of the oppressed and its main concepts. Radical democracy, liberation and participation; modernization and development. Extension or communication? Education as the practice of freedom.	PROF. LIMA	Z6, 2.006
11.45-13.15	<i>Lunch break</i>		
13.15-14.45	Adult education providers in Germany	PROF. EGETENMEYER	Z6, 2.006
14.45-15.00	<i>To Volkshochschule: bus ride with the busses 214 from the bus stop "Philosophisches Institute"</i> <i>To IHK: bus ride with bus 7 from the bus stop "Universitätszentrum"</i> <i>To Robert Kümmert-Academy: bus ride with bus 34 and tram 5 from the bus stop "Am Hubland" and "Reuterstraße"</i>		
Field visits to providers of adult and continuing education in Würzburg			
15.30-17.00	 Volkshochschule (Adult Education Centre) Würzburg and Surroundings e.V. Meeting point: Z6 2nd floor at 14.50	SAAM	HYBRID
	 Chamber of Industry and Commerce (IHK) Würzburg-Schweinfurt Meeting point: Z6 1st floor at 14.50	LEIBINGER	
	 Robert-Kümmert-Academy, Würzburg Meeting point: Z6 ground floor at 14.50	PROF. EGETENMEYER	

Thursday, 6 February 2025			Room
8.30-10.00	Popular adult education and critical literacy: reading the world and reading the words	PROF. LIMA	Z6, 2.006
10.00-10.15	<i>Coffee break</i>		
10.15-11.45	Paulo Freire as public manager of education in the city of São Paulo: "Pedagogy of the city"	PROF. LIMA	Z6, 2.006
12.00-14.00	<i>Bus ride to Frankfurt & Nürnberg</i>		
Field visits to adult education providers beyond Würzburg			
14.00-16.00	 Bildungszentrum (Education Centre) Nürnberg Meeting point: Z6 2nd floor at 12.00	SAAM	
	 Catholic Adult Education (KEB) Frankfurt Meeting point: Z6 1st floor at 12.00	PROF. EGETENMEYER	
	 Caritas Frankfurt Meeting point: Z6 ground floor at 12.00	BOGDANOVIĆ	
	 Deutsche Bahn (German railway), Frankfurt Meeting point: Z6 ground floor at 12.00	LEIBINGER	HYBRID
16.00-18.30	<i>Free time in Frankfurt & Nürnberg</i>		
18.30	<i>Bus ride back to Würzburg</i>		

Week I: Paulo Freire, adult and permanent education



Friday, 7 February 2025			Room
9.00-10.30	The pedagogy of freedom: teaching and learning	PROF. LIMA	Z6, 2.006
10.30-10.45	<i>Coffee break</i>		
10.45-12.15	The pedagogy of freedom: teaching and learning	PROF. LIMA	Z6, 2.006
12.15-13.45	<i>Lunch break</i>		
Field visits to international adult and continuing education associations			
13.45-15.15	 Esther Hirsch — The role of Adult Education in International Development Cooperation - Position and strategies of DVV International (DVV International)		Z6, 2.007, HYBRID
	 Raffaella Kihrer — Herding cats: European advocacy for adult learning and education (EAEA)		Z6, 2.011, HYBRID
	 Katarina Popović — Non-formal civic education: The example of Serbia (ICAE)		Z6, 2.012, HYBRID
15.15-15.30	<i>Coffee break</i>		
15.30-17.00	Reflection of field visits in a Freirean perspective	PROF. LIMA	Z6, 2.006

The moderators and lecturers of week I



Prof. Regina Egetenmeyer, Julius-Maximilian Universität Würzburg, Germany

Regina Egetenmeyer works on questions of lifelong learning, informal learning, and professionalisation in adult education and mobility for learning purposes. Since 2013, she holds the Professorship for Adult and Continuing Education at the University of Würzburg. She is a visiting Professor at the International Institute of Adult and Lifelong Education, New Delhi. Her research emphasis is on international comparative research in adult education and lifelong learning.

Prof. Licínio C. Lima, University of Minho, Portugal

Licínio C. Lima is a Professor em. of Sociology of Education and Educational Administration at the Department of Social Sciences of Education at the University of Minho. He was Head of Department (1998-2004), Head of the Unit for Adult Education (1984-2004), Director of the Research Centre for Education and Psychology (1994-1997) and Director of the PhD in Education. Various European and Brazilian universities hosted him as a guest professor. Further he is an author of many academic works, which are published in nineteen countries, including more than thirty books.



Week II: Comparative studies in adult education and lifelong



Prior to the Adult Education Academy, all master's and doctoral students prepare a transnational essay that is linked to the topic of the comparative group they choose to work in. The transnational essay will comprise the perspective on adult education in their home countries. The writing process will be guided on WueMahara moodle platform by the group moderators. Practitioners will hold their good practice presentation, which they have to submit prior to the Academy. The second week focuses on comparing the contexts and countries identified. The comparative group work will result in an open space presentation on Friday showing the results of the comparison.

Room overview for the Groups A, B & C of international strategies in adult education

Comparative Group 1 Room: Z6, 2.006	Comparative Group 2 Room: Z6, 2.007 hybrid
Comparative Group 3 Room: Z6, 2.005	Comparative Group 4 Room: Z6, 2.011
Comparative Group 5 Room: Z6, 2.004	Comparative Group 6 Room: Z6, 2.003
Comparative Group 7 Room: Z6, 2.012 hybrid	AEA-Team Office Room: Z6, 2.010

Monday, 10 February 2025

			Room
8.30-10.00	Introduction into comparative adult education	PROF. EGETENMEYER	Z6, 1.012
10.00-10.15	<i>Coffee break</i>		
10.15-11.45	Comparative group work: Introduction	IN GROUPS	CG-ROOMS
11.45-13.15	<i>Lunch break</i>		
13.15-14.45	Comparative group work: Participant presentations	IN GROUPS	CG-ROOMS
14.45-15.00	<i>Coffee break</i>		
	Good practice presentations		
	<ul style="list-style-type: none"> <i>Hanna Shvindina</i> — Barriers and Bridges: Examining HEI-NGO Dynamics in Ukraine's Adult Education Framework (CG2) 	PROF. HINZEN	2.007, HYBRID
	<ul style="list-style-type: none"> <i>Nino Kvinikadze</i> — Enhancing AE and LLL in Georgia, A Road-map for Policy and Practice (CG3) 	PROF. BOFFO	2.005
15.00-15.45	<ul style="list-style-type: none"> <i>Kumar Ashutosh & Vandana Sisodia</i> — Creating career opportunities for students of Continuing Education and Extension: Sharing Experiences from Placement Cell, Department of Continuing Education and Extension, University of Delhi (CG5) 	PROF. CORYELL	2.004
	<ul style="list-style-type: none"> <i>Janet Okebiorun</i> — Digital Literacy in Tackling Technologically Related Gender Based Violence at Work Places in Nigeria (CG7) 	PROF. JEAN-FRANCOIS	2.012, HYBRID
15.45-16.30	Comparative group work: Participant presentations	IN GROUPS	CG-ROOMS
18.00	Cultural Evening		In Groups

Week II: Comparative studies in adult education and lifelong



Tuesday, 11 February 2025			Room
8.30-10.00	Comparative group work: Participant presentations	IN GROUPS	CG-ROOMS
10.00-10.15	<i>Coffee break</i>		
10.15-11.45	Comparative group work	IN GROUPS	CG-ROOMS
11.45-13.15	<i>Lunch break</i>		
	Good practice presentations		
	<ul style="list-style-type: none"> <i>Veneranda Paula Byerengo</i> – An assessment of the Universities practices in supporting of development of adult learning and education in Tanzania (CG2) 	PROF. HINZEN	2.007, HYBRID
13.15-14.00	<ul style="list-style-type: none"> <i>Dionisie Cotruta & Aliona Badiur</i> – Establishing first ALE Centre in Chisinau municipality – practical support and policy advice towards increased access, participation and sustainability (CG4) 	PROF. MIKULEC	2.011
	<ul style="list-style-type: none"> <i>Damian Kehinde Adebo</i> – The use of social media tools in Adult Education and Learning delivery in Ekiti state, Nigeria (CG7) 	PROF. JEAN-FRANCOIS	2.012, HYBRID
	Good practice presentations		
	<ul style="list-style-type: none"> <i>Kamila Isataeva</i> – Breaking Barriers: Inclusive Adult Education Practices for People with Disabilities in Kyrgyzstan (CG1) 	PROF. SCHREIBER-BARSCH	2.006
14.00-14.45	<ul style="list-style-type: none"> <i>Frank Mwamakula</i> – Balancing Study and Work Life Among In-service PhD Students: Constraints and Prospects (CG2) 	PROF. HINZEN	2.007, HYBRID
	<ul style="list-style-type: none"> <i>Oyeyemi Aitokhuehi</i> – Organisational Structure of Open and Distance Learning (ODL) in Nigeria (CG4) 	PROF. MIKULEC	2.011
	<ul style="list-style-type: none"> <i>Rahma Dahmani & Saaidia Salem</i> – Digitalization Strategies and Practices in Adult Education in Tunisia (CG7) 	PROF. JEAN-FRANCOIS	2.012, HYBRID
14.45-15.00	<i>Coffee break</i>		
15.00-16.30	Comparative group work	IN GROUPS	CG-ROOMS

Week II: Comparative studies in adult education and lifelong

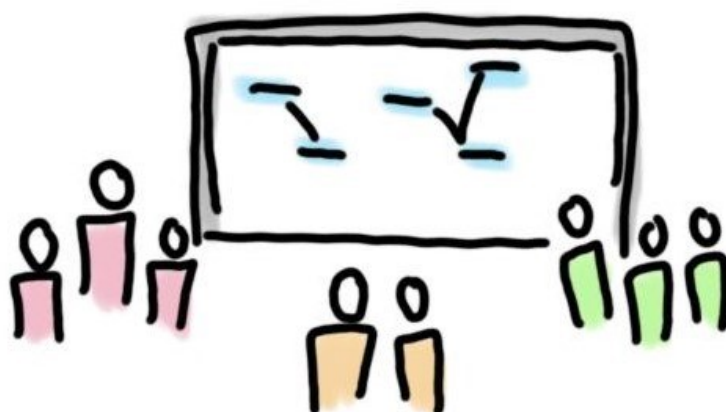


Wednesday, 12 February 2025			Room
8.30-10.00	Comparative group work	IN GROUPS	CG-ROOMS
10.00-10.15	<i>Coffee break</i>		
10.15-11.45	Comparative group work	IN GROUPS	CG-ROOMS
11.45-13.15	<i>Lunch break</i>		
	Good practice presentations		
	<ul style="list-style-type: none"> • <i>Dato Ananidze</i> – Good practice between the local town hall and Keda Community Education Center (CG1) 	PROF. SCHREIBER-BARSCH	2.006
	<ul style="list-style-type: none"> • <i>Raed Otoom</i> – updating and modernization the regulations and policies on adult learning and education in Jordan (CG3) 	PROF. BOFFO	2.005
13.15-14.00	<ul style="list-style-type: none"> • <i>Babandida Ladan</i> – Exploring a Decade of Adult Learning and Education: Case study of the activities of the Nigerian National Council for Adult Education (NNCAE), 2014-2024 (CG4) 	PROF. MIKULEC	2.011
	<ul style="list-style-type: none"> • <i>Endrita Mehmeti</i> – Fostering lifelong learning: The impact of VHS initiatives in Kosovo (CG6) 	PROF. GUIMARAES	2.003
	<ul style="list-style-type: none"> • <i>Laiana Masawada</i> – Bridging Gaps: Digitalization in Adult Education and Learning in Palestine – International Strategies and Local Practices (CG7) 	PROF. JEAN-FRANCOIS	2.012, HYBRID
	Good practice presentations		
	<ul style="list-style-type: none"> • <i>Dzhamilia Asanbekova</i> – Inclusive Education for Students with Disabilities at Osh State University: Integration, Sustainable Development, and Legal Initiatives (CG1) 	PROF. SCHREIBER-BARSCH	2.006
	<ul style="list-style-type: none"> • <i>Sabina Susic & Dzenita Dzano</i> – Concept of the work of the Center for Active Ageing Sarajevo – Programs, Activities, and Initiatives Supporting Active Ageing (CG3) 	PROF. BOFFO	2.005
14.00-14.45	<ul style="list-style-type: none"> • <i>Muhammad Shitu Bello</i> – The Role of The International Association for Community Development (IACD) in Strengthening Lifelong Learning Opportunities for Community Development Practitioners in Nigeria (CG4) 	PROF. MIKULEC	2.011
	<ul style="list-style-type: none"> • <i>Ekhlal Al Zayadat</i> – The AEL approaches and community of practice – Jordan experience (CG6) 	PROF. GUIMARAES	2.003
	<ul style="list-style-type: none"> • <i>Hala Nassar</i> – Adult learning and Digitalization at Bethlehem University in Palestine (CG7) 	PROF. JEAN-FRANCOIS	2.012, HYBRID
14.45-15.00	<i>Coffee break</i>		
15.00-16.30	Comparative group work	IN GROUPS	CG-ROOMS
16.30-17.00	Information on examination and grading possibilities	PROF. EGETENMEYER Z6, 1.012	

Week II: Comparative studies in adult education and lifelong



Thursday, 13 February 2025			Room
8.30-10.00	Comparative group work	IN GROUPS	CG-ROOMS
10.00-10.15	<i>Coffee break</i>		
10.15-11.45	Comparative group work	IN GROUPS	CG-ROOMS
11.45-13.15	<i>Lunch break</i>		
13.15-14.45	Comparative group work	IN GROUPS	CG-ROOMS
14.45-15.00	<i>Coffee break</i>		
15.00-16.30	Comparative group work	IN GROUPS	CG-ROOMS
16.30-17.00	Information about the possibility of publication (doctoral students and practitioners)	PROF. PEJATOVIĆ	Z6, 1.012



Week II: Comparative group presentations



Friday, 14. February 2025			ROOM
8.30-8.45	Welcome to the group presentation	PROF. EGETENMEYER	Z6, 1.012
8.45-9.10	Comparative group 1— audience group 5		Z6, 2.006
	Comparative group 2— audience group 6		Z6, 2.007, HYBRID
	Comparative group 3— audience group 7 (part 1)		Z6, 2.005, HYBRID
	Comparative group 4— audience group 7 (part 2)		Z6, 2.011, HYBRID
9.15-9.40	Comparative group 1— audience group 6		Z6, 2.006
	Comparative group 2— audience group 7 (part 1)		Z6, 2.007, HYBRID
	Comparative group 3— audience group 7 (part 2)		Z6, 2.005, HYBRID
	Comparative group 4— audience group 5		Z6, 2.011
9.40-10.10	Coffee Break		
10.10-10.35	Comparative group 1— audience group 7 (part 1)		Z6, 2.006, HYBRID
	Comparative group 2— audience group 7 (part 2)		Z6, 2.007, HYBRID
	Comparative group 3— audience group 5		Z6, 2.005
	Comparative group 4— audience group 6		Z6, 2.011
10.40-11.05	Comparative group 1— audience group 7 (part 2)		Z6, 2.006, HYBRID
	Comparative group 2— audience group 5		Z6, 2.007
	Comparative group 3— audience group 6		Z6, 2.005
	Comparative group 4— audience group 7 (part 1)		Z6, 2.011, HYBRID
11.05-12.35	<i>Lunch break</i>		
12.35-13.00	Comparative group 5— audience group 1		Z6, 2.004
	Comparative group 6— audience group 2		Z6, 2.003, HYBRID
	Comparative group 7 (part 1)— audience group 3		Z6, 2.012, HYBRID
	Comparative group 7 (part 2)— audience group 4		Z6, 2.014, HYBRID
13.05-13.30	Comparative group 5— audience group 2		Z6, 2.004, HYBRID
	Comparative group 6— audience group 3		Z6, 2.003
	Comparative group 7 (part 1)— audience group 4		Z6, 2.012, HYBRID
	Comparative group 7 (part 2)— audience group 1		Z6, 2.014, HYBRID
13.30-14.00	Coffee break		
14.00-14.25	Comparative group 5— audience group 3		Z6, 2.004
	Comparative group 6— audience group 4		Z6, 2.003
	Comparative group 7 (part 1)— audience group 1		Z6, 2.012, HYBRID
	Comparative group 7 (part 2)— audience group 2		Z6, 2.014, HYBRID
14.30-14.55	Comparative group 5— audience group 4		Z6, 2.004
	Comparative group 6— audience group 1		Z6, 2.003
	Comparative group 7 (part 1)— audience group 2		Z6, 2.012, HYBRID
	Comparative group 7 (part 2)— audience group 3		Z6, 2.014, HYBRID
14.55-15.20	Evaluation		CG-ROOMS
18.00	Closing session and celebratory evening at Neubaukirche		

Week II: Comparative group overview



Topic	Moderators
Group 1 (on-site): Adult learning and education for all?! Issues of inclusion with regard to disability in the limelight	<i>Prof. Silke Schreiber-Barsch, University of Duisburg-Essen, Germany</i> <i>Joseph Badokufa Bulugu, University of Duisburg-Essen, Germany</i>
Group 2 (hybrid): Higher education supporting the development of adult learning and education: Examples, experiences, expectations	<i>Prof. Heribert Hinzen, University of Pécs, Hungary</i> <i>Prof. Balázs Németh, University of Pécs, Hungary</i> <i>Prof. Mar Joanpere Foraster, University of Tarragona, Spain</i>
Group 3 (on-site): Education, Learning and Active Ageing: Competences for Work and Life	<i>Prof. Vanna Boffo, University of Florence, Italy</i> <i>Prof. Fabio Togni, University of Florence, Italy</i>
Group 4 (on-site): Actors and governance of adult learning and education systems	<i>Prof. Borut Mikulec, University of Ljubljana, Slovenia</i>
Group 5 (on-site): Higher/Adult Education for sustainable development: policies and practices	<i>Prof. Monica Fedeli, University of Padova, Italy</i> <i>Prof. Joellen Coryell, Texas State University, United States of America</i>
Group 6 (on-site): National/regional adult education and lifelong learning policies	<i>Prof. Natália Alves, University of Lisbon, Portugal</i> <i>Prof. Paula Guimarães, University of Lisbon, Portugal</i> <i>Prof. Amina Isanović Hadžiomerović, University of Sarajevo, Bosnia and Herzegovina</i>
Group 7 (hybrid): Digitalization on Adult Education and Learning	<i>Dr. Lisa Breitschwerdt, Julius-Maximilian-Universität Würzburg, Germany</i> <i>Prof. Emmanuel Jean-Francois, Xavier University of Louisiana, United States of America</i> <i>Prof. Sabine Schmitt-Lauff, Helmut-Schmidt-Universität Hamburg, Germany</i>

Week II: Comparative group moderators



Comparative Group 1: Adult learning and education for all?! Issues of inclusion with regard to disability in the limelight.

Prof. Silke Schreiber-Barsch, University of Duisburg-Essen, Germany

Prof. Silke Schreiber-Barsch, PhD, is Professor in adult and further education at University of Duisburg-Essen, Germany. Moreover, she has been appointed as Research Associate at the Centre for Higher and Adult Education, Stellenbosch University, South Africa. Her research interests include international and comparative adult education, lifelong learning, issues of participation and social inclusion/exclusion, global citizenship education, and adult education and disability.



Co-Moderator: Joseph Badokufa Bulugu, University of Duisburg-Essen, Germany

Joseph Badokufa Bulugu is a researcher and a PhD candidate at the Professorship for Adult Education at University of Duisburg-Essen. As a faculty member of the department of education foundations at St. Augustine University of Tanzania, Mwanza Tanzania, he is engaged in the teacher education program. He is a pioneer of the St. Augustine University of Tanzania Service-Learning program. Through this program tens of students and young adults are mentored through critical service learning with a focus on global citizenship education, sustainability, employability, lifelong learning, and related current crosscutting issues.

Comparative Group 2: Higher education supporting the development of adult learning and education: Examples, experiences, expectations

Prof. Heribert Hinzen, University of Pécs, Hungary

Heribert Hinzen is a senior consultant on adult education and lifelong learning for sustainable development. He worked for DVV International for almost four decades, both in headquarters and in offices in Sierra Leone, Hungary and Lao PDR. He is an Honorary Professor at the University of Pécs, and teaches comparative adult education in Würzburg. His research interests include the institutionalization and professionalization of ALE, global citizenship education as well as education for sustainable development.



Prof. Balázs Németh, University of Pécs, Hungary

Balázs Németh is an associate professor and reader in Adult Learning and Education at the University of Pécs. He is also a founding member of the Hungarian University Lifelong Learning Network (MELLearn) and represents the University of Pécs in the European Universities Continuing Education Network (EUCEN) and in the European Association for the Education of Adults (EAEA). His research focus is on comparative analysis of policies of the member states of the EU on adult and lifelong learning.

Week II: Comparative group moderators



Prof. Mar Joanpere Foraster, University of Tarragona, Spain

Mar Joanpere Foraster, PhD in Sociology. She has developed a diverse and impactful career as a researcher with a focus on social impact and co-creation. She is a member of the consolidated research group "Social Impact and Education" (IMSE), led by Dr. Oriol Ríos at Universitat Rovira i Virgili. And she is a postdoctoral researcher in the Department of Business Management at the same university. Over the years, she has contributed to seven major research projects, including three within European frameworks and three under the National R&D&I Plan.



Comparative Group 3: Education, Learning and Active Ageing: Competences for Work and Life

Prof. Vanna Boffo, University of Florence, Italy

Prof. Dr. Vanna Boffo, PhD, is Full Professor in Adult and Continuing Education and Head of the Department of Education, Languages, Interculture, Literatures and Psychology at the University of Florence, Italy (2021-2025). She is Coordinator of Education and Psychology Doctoral Course (2019-2025). Her research focuses on the transition to work at the Higher Education level. She is Coordinator of the Transversal Board Learning, Education and Active Ageing in the Resilience and Recovery Plan Programme "Age-it. Consequences and challenges of ageing" (2023-2026).



Co-moderator: Prof. Fabio Togni, University of Florence, Italy

Prof. Fabio Togni, PhD, is Associate Professor in General and Social Pedagogy at the Department of Education, Languages, Interculture, Literatures and Psychology, University of Florence, Italy. His research focuses on Philosophy of Education, Longevity and Quality Education at the Higher Education level.

Comparative Group 4: Actors and governance of adult learning and education systems

Prof. Borut Mikulec, University of Ljubljana, Slovenia

Dr. Borut Mikulec is associate professor of adult and continuing education at the Department of Educational Sciences at the University of Ljubljana. His research areas include the role of transnational organisations in education policy, international and comparative adult education, the policy in adult education, professionalization of adult educators, continuing vocational education and training, and citizenship education.



Week II: Comparative group moderators



Comparative Group 5: Higher/Adult Education for sustainable development: policies and practices

Prof. Monica Fedeli, University of Padova, Italy

Prof. Monica Fedeli PhD, currently Vice-Rector at Third Mission and full professor at University of Padova. She has been Adjunct Professor at Boston University, at Michigan State University, at Julius-Maximilian University of Wurzburg, Germany, and Visiting Professor at California University Berkeley, School of Education. Her research interests include: active teaching, participatory teaching and learning, faculty development, university business dialogue, women leadership, and professional development. She published more than 70 articles, books, and book chapters in variety of national and international journals, and book series.



Dr. Joellen Coryell, Texas State University, United States of America

Joellen E. Coryell, PhD, is Associate Dean for Educational Partnerships and Enrollment for the College of Education and Professor of Adult, Professional, and Community Education in the Department of Counseling, Leadership, Adult Education, and School Psychology at Texas State University. She holds a PhD in educational human resource development and adult education from Texas A&M University. Across her career, she worked in executive business management and corporate training, in faculty development for learning and teaching, and as program director for master's and doctoral programs in two universities. In her current role as Associate Dean, she provides direction for creating and sustaining educational partnerships in the public and private sectors.



Comparative Group 6: National/regional adult education and lifelong learning policies

Prof. Paula Guimarães, University of Lisbon, Portugal

Prof. Paula Guimarães, PhD, is an assistant professor at the Instituto de Educação, Universidade de Lisboa (Portugal) since 2012. She holds a PhD in (adult) Education Policies and still researches this topic at a local, national and supra/international levels. Her research interests also include the links between adult education policies and adult educators work and jobs.



Prof. Natália Alves, University of Lisbon, Portugal

Prof. Natália Alves, PhD, is an associate professor at the Institute of Education, University of Lisbon. She holds a PhD. on Sociology of Education. Her main fields of research are school to work transitions and IVET and CVET policies, forms of provision, and practices.



Week II: Comparative group moderators



Prof. Amina Isanović Hadžiomerović, University of Sarajevo, Bosnia and Herzegovina

Assist. Prof. Amina Isanović Hadžiomerović teaches Adult Education, Career Guidance, Evaluation in Education and Research Methods at the Faculty of Philosophy, University of Sarajevo (Bosnia and Herzegovina). She is also head of the Lifelong Learning and Continuing Education Center at the same Faculty.

Comparative Group 7: Digitalization in Adult Education and Learning

Prof. Emmanuel Jean-Francois, Xavier University of Louisiana, United States of America

Dr. Emmanuel Jean-Francois is Associate Professor of Educational Leadership at Xavier University of Louisiana (New Orleans). His most recent books include: “Transnational perspectives on innovation in teaching and learning technologies” (2018), Perspectives in Transnational Higher Education (2016), “Building global education with a local perspective: An introduction to global higher education (2015)”, “Financial sustainability for non-profit organizations (2014)”, “Trans-cultural blended learning and teaching in post-secondary education (2012)”, “DREAM model to start a small business (2011)”, and “Global education on trial by U.S. college professors (2010)”. He is the Editor-in-Chief of the peer-reviewed journal The African Symposium, the Chair of the African Educational Research Network (AERN), and is the Past-President of the Transnational Education and Learning Society (TELS).



Dr. Lisa Breitschwerdt, Julius-Maximilian Universität of Würzburg, Germany

Dr. Lisa Breitschwerdt is a research associate at the Professorship for Adult and Continuing Education at the Universität of Würzburg. She works on digitalisation in adult and higher education, among other things on the didactic-technical conception and design of synchronous hybrid settings, questions of the impact of digital transformation on adult education organisations and the beliefs of adult educators towards digitalisation and the use of digital media. Other areas of her interests lie in professionalisation in adult education, didactics and methods of teaching and learning and dialogical perspectives in adult education research.



Prof. Sabine Schmidt-Lauff, Helmut Schmidt University Hamburg, Germany

Sabine Schmidt-Lauff holds the Professorship for Continuing Education and Lifelong Learning at Helmut-Schmidt University of Hamburg since September 2016. Since 2020, she has been a member of the Senate Committee for International Affairs (Senatsausschuss für Internationales) of the HSU. She is a member of the German Society for Educational Sciences (Deutsche Gesellschaft für Erziehungswissenschaften DGfE), Adult Education Section and was Chairperson of the Board from 2010 to 2014. She was Guestlecturer and Sub-Coordinator of the Autumn School in the framework programme Indian and European Insights of the German Academic Exchange Service (DAAD). She has also been involved in the previous ERASMUS+ COMPALL (Comparative Studies in Adult Education and Lifelong Learning; 2015 - 2018) and INTALL (International and Comparative Studies for Students and Practitioners in Adult Education and Lifelong Learning; 2018 - 2021) Strategic Partnerships. She is a reviewer for the DFG (German Research Foundation) and the Alexander von Humboldt Foundation.



Certification and follow-up

Participation certificate and grading possibilities

After successfully participating in the Adult Education Academy and completing a transnational essay, students receive a certificate of attendance (10 ECTS). All formally registered students can opt to participate in an examination for receiving a formal transcript including a grade (15 ECTS).

Participation is considered successful after **attending the complete programme** and either **submitted a transnational essay and passed the plagiarism check (master's and doctoral students)** or **if you gave a good practice presentation during the Academy (practitioners)**.

Please be aware that **participation is only possible if you complete the preparations during the preparation phase and attend the full programme**, which starts on 3 February 2025, 8:30 am CET and ends on 14 February 2025 at 3:30 pm CET. In exceptional cases, which will be considered individually, it is possible to receive individual certificates for one of the two weeks or a good practice presentation.

Option 1 (10 ECTS)

Participation in the online preparatory phase + full attendance at the Academy in february

Submission of a transnational essay

Option 2 (15 ECTS + grade)

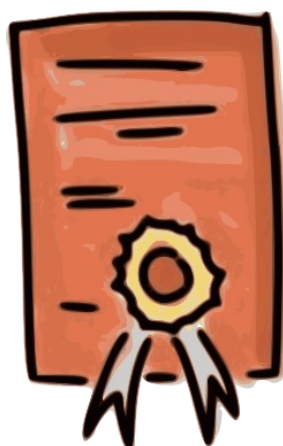
Participation in the online preparatory phase + full attendance at the Academy in february

Submission of a transnational essay

Submission of the transnational essay for grading and a plagiarism check

Publication option

Doctoral students and practitioners have the option to get guidance for publishing a joint comparative paper together with their comparative group moderators after the Adult Education Academy. Further information for those interested in this option will be provided during the Adult Education Academy.



Join us on social media

#AEAcademyWue

LinkedIn Network

The LinkedIn Network for adult education and lifelong learning is one of several features of the annual Adult Education Academy. Our aim is to connect students, researchers, experts and professors interested in adult education and lifelong learning. We offer two LinkedIn groups: an “internal group” and a “professional network”. As a (future) participant with a LinkedIn account, we invite you to join the professional network.



The “Professional network for adult education and lifelong learning”

As a larger platform, the professional network is an extension of the internal group for professionals, whose jobs, studies or interests link them to adult education and lifelong learning. For this reason, we have set up our public LinkedIn group for participants from all former Adult Education Academies and also for professionals working in the field. Not only will you be able to connect with fellow students and professionals, you will also get information about international conferences, fellowships/scholarships, research projects, recently published papers, calls for papers, professional newsletters, online presentations and, of course, member’s thoughts about various topics in adult education and lifelong learning. This group already has over 1400 members from all over the world.

Join our professional LinkedIn network

go.uniwue.de/linkedin-network

The Professorship for Adult and Continuing Education on Social Media

Follow us on X (@EBWuerzburg) so you don’t miss any news regarding our Professorship. Use [#AEAcademyWue](#) when you tweet about your experiences in relation to the Adult Education Academy! We are looking forward to reading from you.

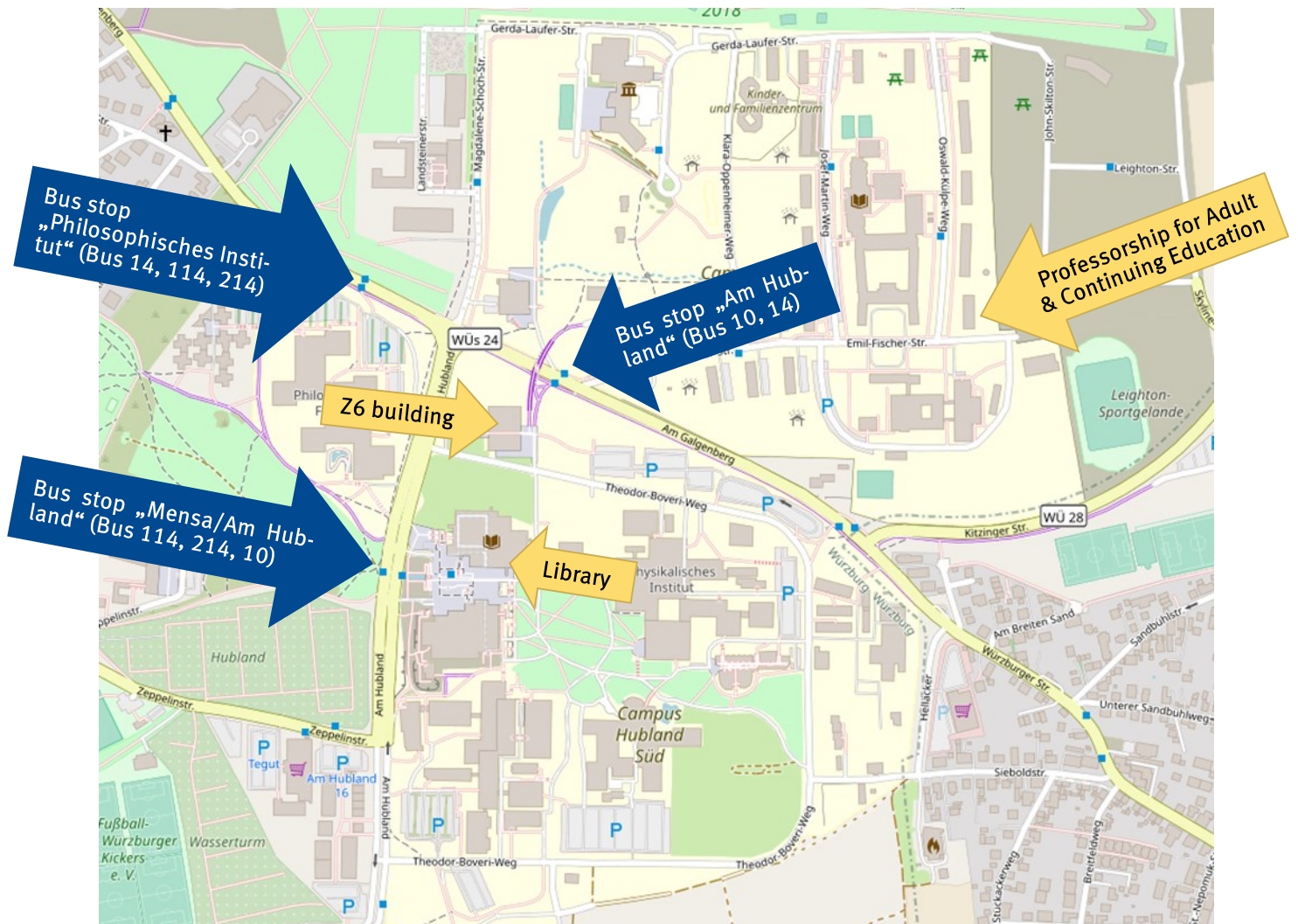


Follow us on Instagram (@ebwuerzburg)! In addition to the Twitter channel, we post information about the Chair of Adult/Continuing Education on our Instagram account. You can also reach us here for general questions via direct message.

Travel & Venue

Venue

Zentrales Hörsaal- und Seminargebäude (Z6)
University of Würzburg
Am Hubland
97074 Würzburg



© OpenStreetMap. This map is made available under the Open Database License: <http://opendatacommons.org/licenses/odbl/1.0/>. Any rights in individual contents of the database are licensed under the Database Contents License: <http://opendatacommons.org/licenses/dbcl/1.0/>

To get to the venue of the event, you can either take bus 10 that departs at “Sanderring” until “Am Hubland”, or bus 14 that departs at “Hauptbahnhof” (main train station) until “Am Hubland”. The duration for both bus connections is approx. 20min. On the right side of the bus stop you can see the building of “Zentrales Hörsaal- und Seminargebäude” (Z6). Furthermore, you can take the bus 114 that departs at “Hauptbahnhof” until “Hubland/Mensa” or bus 214 that departs at “Hauptbahnhof” until “Hubland/Mensa”. From both stops it’s only a few meters until “Zentrales Hörsaal- und Seminargebäude” (Z6 building)

Campus: wueaddress.uni-wuerzburg.de/search/map?q=Geb.+Z6%2C+Hubland+S%C3%BCD

Würzburg: <https://geostadtplan.wuerzburg.de/?lang=en>

Accommodation

The Julius-Maximilian-University holds various hotel cooperation partners that enable you to use a reduced university guest fee. The hotel prices start at 99 EUR per night. In shared bed dorms prices start at 27 EUR per night.

Please consider that we cannot guarantee any free space or the named price. We recommend you to book an accommodation right after your registration.

Vacation apartments as well as B&Bs can be found at the website of Würzburg city:

<http://www.wuerzburg.de/en/visitors/more-acco/index.html>

Hotels can be found at the website of Würzburg city:

<http://www.wuerzburg.de/en/visitors/hotels-hostels/index.html>

Key

Groups of people



Master Students



Doctoral Students

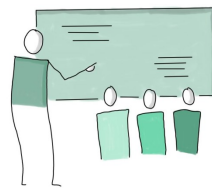


Practitioners

#AEAcademy phases



Preparation phase



Week 1



Week 2



Certification & Follow-up

Activities



Field visit



Good practice presentation



Comparative group presentation

JMU platforms

Catalogue University Library Würzburg

In the catalogue you will find books and other media that are printed or available electronically from us. At the same time, you can also search many databases and other sources for independent literature, such as articles from magazines. This literature is not always available with us.



[Searching the catalogue - University Library \(uni-wuerzburg.de\)](https://uni-wuerzburg.de)

Outlook / Microsoft Exchange

You can retrieve the e-mail address that you receive from the university at any time without a special mail client from the browser (<name.surname>@stud-mail.uni-wuerzburg.de).



[JMU Mail \(uni-wuerzburg.de\)](https://uni-wuerzburg.de)

WueCampus

WueCampus is the university-wide online learning platform that provides the learning content, the organisation of learning units and learning processes, and serves as a communication platform.



[WueCampus \(uni-wuerzburg.de\)](https://uni-wuerzburg.de)

WueMahara

Mahara is an e-portfolio software with community functions. The system supports the documentation and reflection of the learning process and the learning outcomes.



[Home page - Mahara \(uni-wuerzburg.de\)](https://uni-wuerzburg.de)

WueStudy

WueStudy is the campus management system of the JMU and supports the entire student life cycle for all participants. On the platform you can find application management, student management, course management, event and room management and audit management.



[Home page - WueStudy \(uni-wuerzburg.de\)](https://uni-wuerzburg.de)

Zoom

Zoom Meetings is a video conferencing tool with recording and screen sharing features.



[Video conferences, web conferences, Webinars, Screensharing - Zoom](https://uni-wuerzburg.de)

Team of the Adult Education Academy



Prof. 'in Dr. Regina Egetenmeyer

Head of the Professorship for
Adult and Continuing Education



Julia Saam, M.A.

Contact for the Adult Education
Academy programme



Laura Leibinger, M.A.

Contact for the Adult Education
Academy programme



Dr. Lisa Breitschwerdt

Contact for the Ault Education
Academy programme



Vanja Bogdanović, B.A.

Contact for ERASMUS+



Eva Schiffner, M.A.

Contact for the Double Degree
Master in Adult Education



Kilian Troidl, M.A.

Contact for the Double Degree
Master in Adult Education



Christina Hümmer, M.A.

Contact for hybrid teaching

Contact information

Julius-Maximilian University Würzburg
Institute for Education
Professorship for Adult and Continuing Education
Oswald-Külpe-Weg 82
97074 Würzburg, GERMANY

Phone.: +49 931-31 85226
lifelonglearning@uni-wuerzburg.de
www.lifelonglearning.uni-wuerzburg.de
X: EBWuerzburg
Instagram: ebwuerzburg

Venue

University of Würzburg
Z6 building "Zentrales Hörsaal- und
Seminargebäude"
Winter School Office: Room 2.010 (2nd floor)
Campus Hubland Nord
97074 Würzburg

We wish you all the best and stay healthy!

Adult Education Academy 2025

International and comparative studies
in adult education and lifelong learning

All rights reserved.

Julius-Maximilian University Würzburg
Institute for Education
Professorship for Adult and Continuing Education
Oswald-Külpe-Weg 82
97074 Würzburg, GERMANY
Tel.: +49 931-31 85226
lifelonglearning@uni-wuerzburg.de
www.lifelonglearning.uni-wuerzburg.de

A
E
A
C
A
D
E
M
Y
-
G
U
I
D
E